



Growing with ideas

# UNIMAS Sportswear Ltd.®



**Growing with Ideas**

# Factory Information

## Unimas Sportswear Limited

Established Year	1999, Mainland acquired majority of shares on March 13, 2013
Total Factory Area	694,099 Sq. Ft
Production Area	374,440 Sq. Ft
Dormitory Area	31,430 Sq. Ft.
Dedicated NE Area	113,500 Sq. Ft (2 Floors)
FGWH & Warehouse	140,037 Sq. Ft
Total Work Force	4998
Production Capacity	4 million pcs/month

# Existing Floor Plan

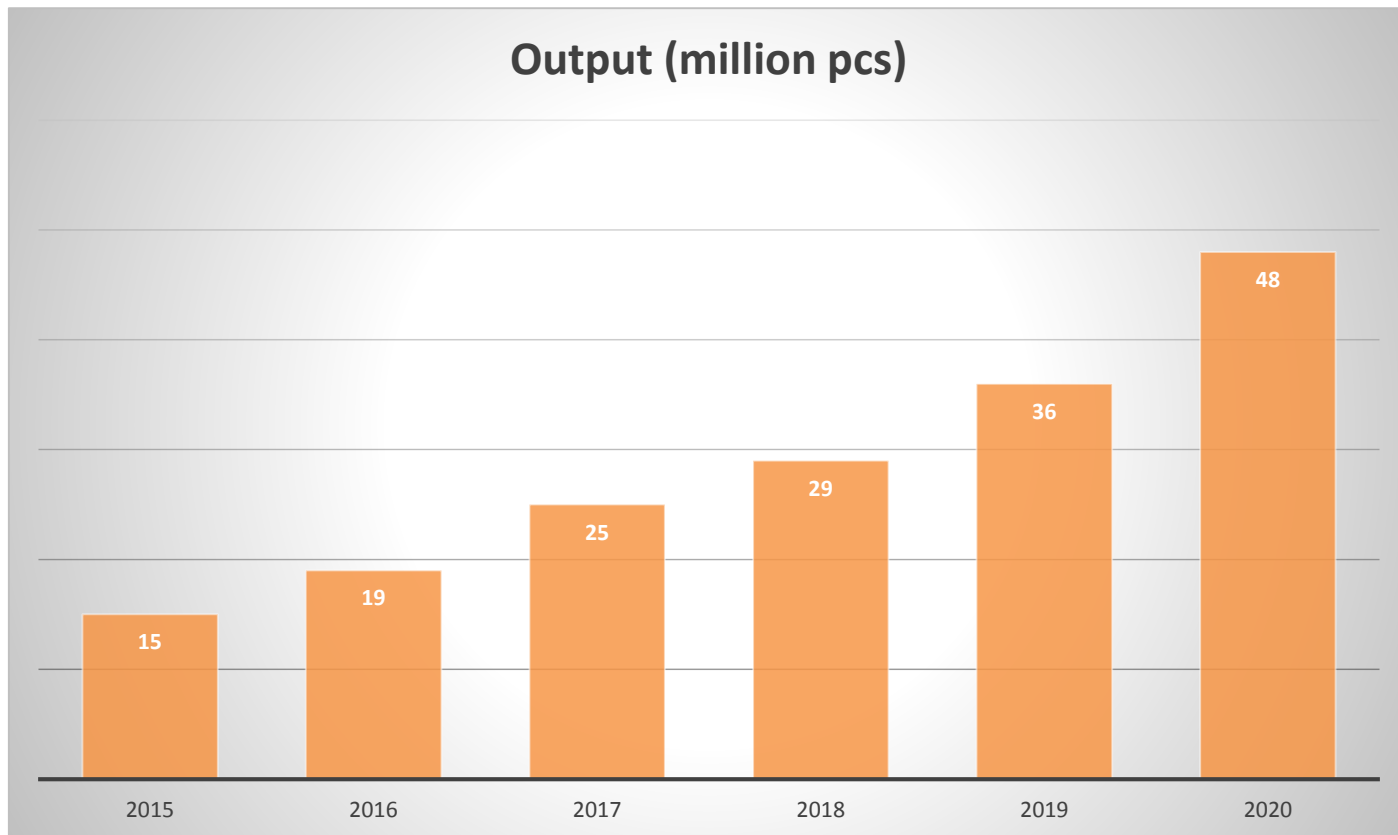
<b>Production Floor Setup</b>	<b>7<sup>th</sup> Floor</b>	<b>Production Unit - 12 Lines</b>
	<b>6<sup>th</sup> Floor</b>	<b>Production Unit – 19 Lines, Hanger Unit – 5 Lean</b>
	<b>5<sup>th</sup> Floor</b>	<b>Production Unit – 12 Lines, Hanger Unit – 12 Lean</b>
	<b>4<sup>th</sup> Floor</b>	<b>Production Unit – 12 Lines</b>
	<b>3<sup>rd</sup> Floor</b>	<b>Auto Visor / Sublimation</b>
	<b>2<sup>nd</sup> Floor</b>	<b>Sample Room</b>
	<b>1<sup>st</sup> Floor</b>	<b>Embroidery Section</b>

# Total Workforce

Description	No
Sewing Machine Operators	2524
Helpers	242
Supervisors	310
Cutting	135
Finishing / Packing	337
Office Staff	322
Embroidery Section	632
Quality Assurance	249
Others	247
<b>Grand Total</b>	<b>4998</b>

# Yearly Production Output

Year	2015	2016	2017	2018	2019	2020
Output	15M	19M	25M	29M	36M	48M



# Production Capacity

	Product	# of PCS/Year
<p>Cut &amp; Sew (Baseball, Visors, Buckets, Cadets)</p>		46,000,000
<p>Straw (Real Straws, Paper, Braided)</p>		413,000
<p>Knits (Flat, Jacquard, Circular, Scarves, Gloves)</p>		765,600
<p>Seam-Sealed (Bonded, Waterproof, Water-Resistant)</p>		688,000
<p>Belts (PU, Leather, Braided)</p>		2,204,000
<p>Wallets (PU, Leather, Cloth)</p>		464,000

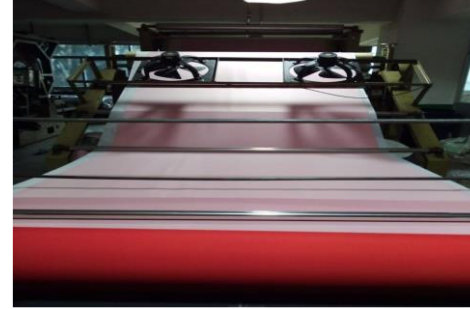
# In-house Capabilities



Sublimation



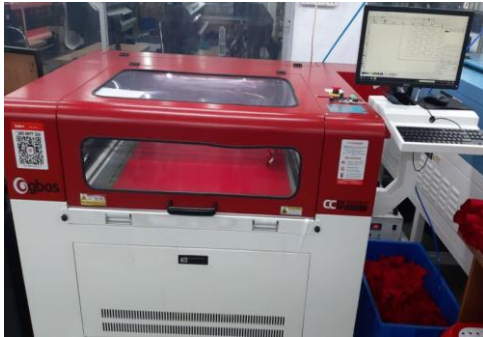
Embroidery



Print Transfer



Label Printing



Laser Cutting



Fusing



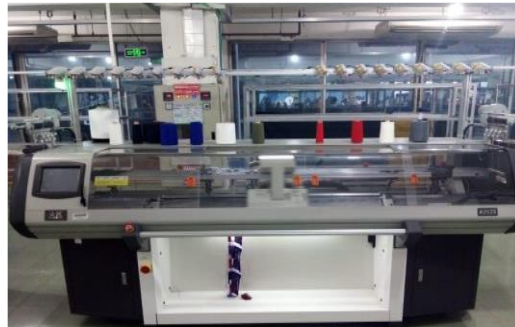
Yarn Winding



Heat Press



Laser Printing



Knits

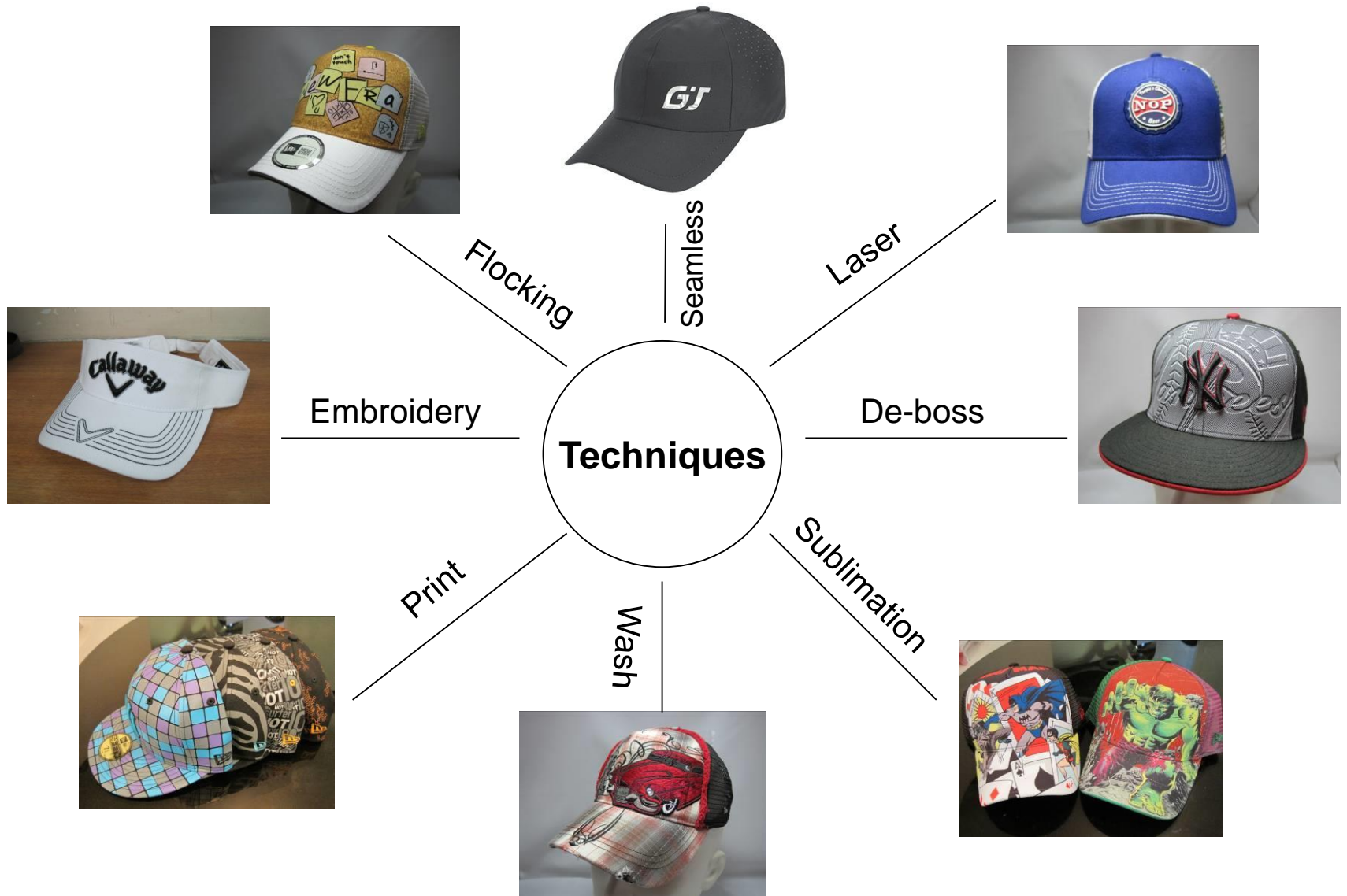


Gloves








Straws

# Embellishments









# Automation Machineries

MACHINERY TYPE / FUNCTION	PHOTO	DESCRIPTION / CAPABILITIES	# OF MACHINES	DAILY OUTPUT	SPEC
Auto visor stitching Machine (flat visor)		visor stitching	18	39600 pcs	18X100pcsX22h
Auto visor stitching Machine (curved visor)		visor stitching	50	88000 pcs	50X80pcsX22h
Closure strap machine		make/cut/fold/sew closure strap	6	39600 pcs	6X300pcsX22h
Sweatband cutting machine (for elastic SB)		cut/sew elastic sweatband	2	13200 pcs	2X300pcsX22h
Laser die cut machine		laser die cut machine	2	160000 panels	2X3650pcsX22h

# Automation Machineries

MACHINERY TYPE / FUNCTION	PHOTO	DESCRIPTION / CAPABILITIES	# OF MACHINES	DAILY OUTPUT	SPEC
auto make sweatband (non-elastic)		sweatband(no elastic)	5	35000 yards	5X700yardsX10h
auto thread cutting machine		thread cutting	72	129600 pcs	72X2X90pcsX10h
Automatic Velcro sewing machine		make/cut/fold/sew closure strap and velcro	12	66000pcs	12X250pcsX22h
Wrapped button machines		Wrap the fabric cloth to the button	2	36000pcs	2X1800pcsX10h

# Automation Machineries



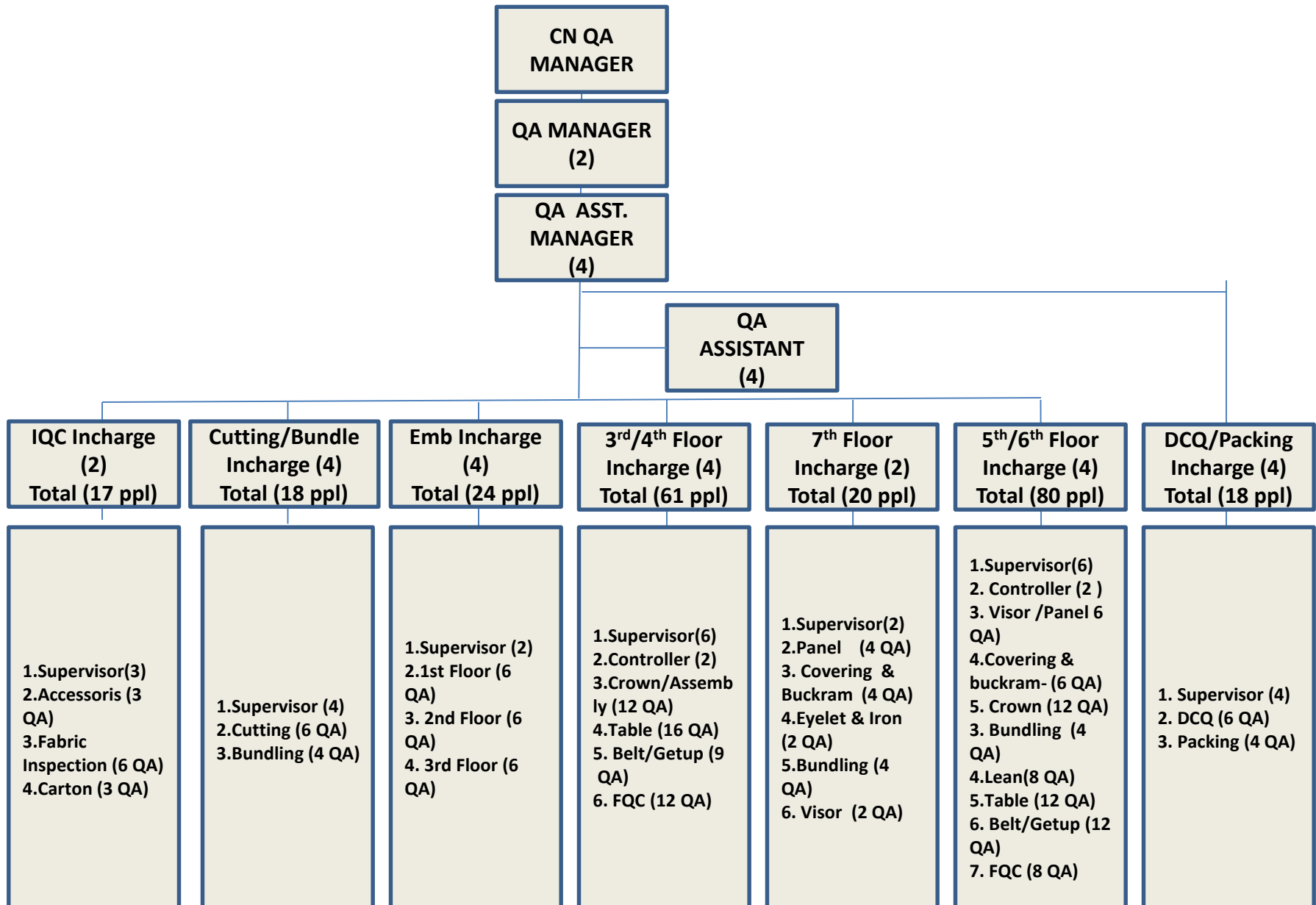
Implemented Boxline conveyor belt throughout the factory production floors to maximize efficiency and minimize loss, costs and transportation time.



Implemented computerized production hanger system to fully control production efficiency, quality and data management.



# QC Organization chart 249



# QC Process Checking System



## Incoming QC

Incoming QC based on AQL 1.5 inspect incoming material

## Cutting QC

Cutting QC randomly check fabric shade, Check pattern and follow AQL 2.5 for check the fabric defect

## Visor QC

Visor QC make sure 1<sup>st</sup> pcs visor bulk with sample and order sheet. Also randomly check each operator sewing finish goods.

## Lean QC

Lean QC check the Bulk with production sheet, pps sample, art work and Confirm First Pcs. Also randomly check each operator sewing finish goods



## Table QC

Table QC 100% check all the goods.

## Belt QC

After blocking belt QC 100% check all the goods and make sure before packing all cap Quality is ok

## FQC

follow AQL2.5 for check each and every po after finish packing. If find any problem that po fail by FQC and return for re-check

## DCQ

Without DCQ pass information in ERP system PO can't ship out From factory

# Compliance Certificates Awarded



# Corporate Social Responsibility



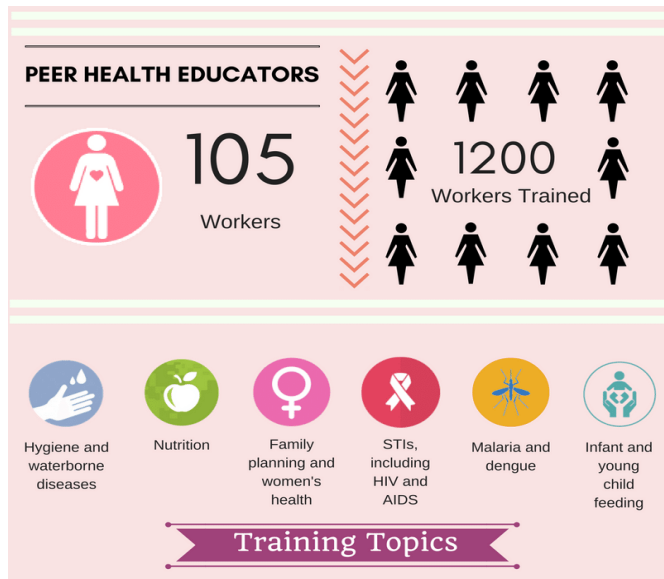
- We're committed to contribute and build local community through various donations activities
- Local government recognized our efforts and named local area Mainland Town.

# Corporate Social Responsibility



## CSR project at BD - HerProject

- 18 months project focus on Women's Health which is started from Mar, 2016
- 105 Peer Health Educator will be trained for 6 main health related topics
- 1200 workers have been trained by Peer Health Educator and it has been continuing







**UNIMAS Sportswear Ltd.®**

*We Commit, we grow,  
we strive for excellence.*

*Thank  
You!*